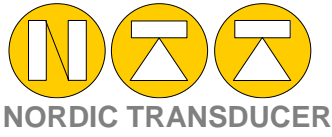


D100

High Capacity Tension Load cell



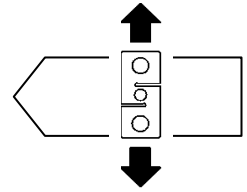
NORDIC TRANSDUCER

Protection Class: IP65/68

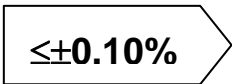
Completely LASER welded

High long term stability

For dynamic applications



NOW ALSO AS 2.4GHZ WIRELESS SYSTEM



Linearity – Hysteresis, now also with connector mounted direct on the cell



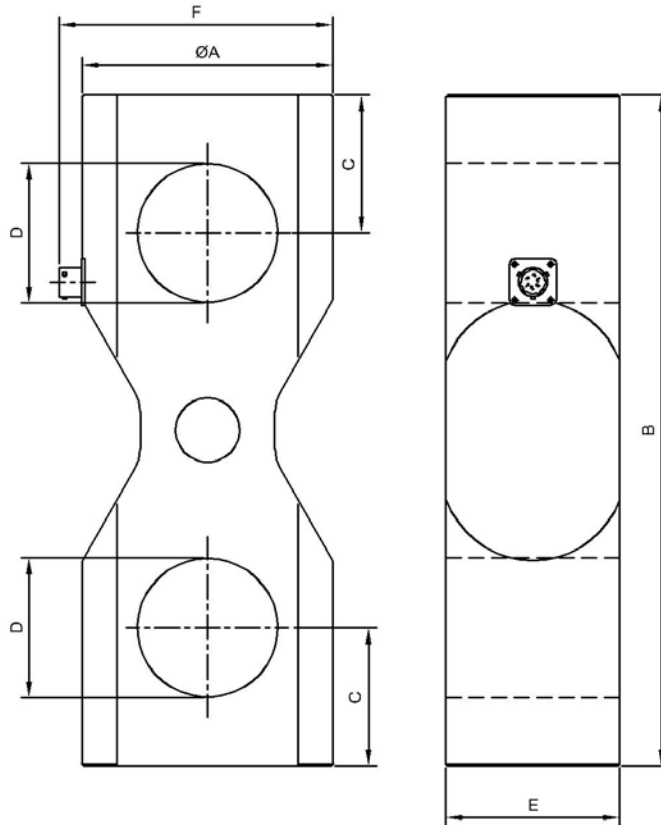
D-100

Tension load cell can also be supplied with different types of instruments as shown here with the DFI battery operated instrument



D-100

Tension load cell shown here with MIL connector, can also be supplied with IP68 fixed cable output



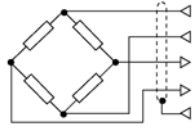
CODE	LOAD	ØA	B	C	D	E	F
CD10020TC25	20 t	100	280	50	58	78	114
CD10030TC25	30 t						
CD10050TC25	50 t						
CD10075TC25	75 t	127	340	70	71	88	139
CD100100TC25	100 t						

Technical Data



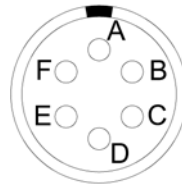
ACCURACY CLASS:	0.1% F.S.
LINEARITY and HYSTERESIS (for each)	0.1% F.S.
NOMINAL LOAD	20 – 30t 50t 75t 100t
TEMPERATURE EFFECT (10 °C)	
a) on zero	≤ ±0.028% F.S.
b) on sensitivity	≤ ±0.008% F.S.
NOMINAL SENSITIVITY	1mV/V
CALIBRATION TOLERANCE	≤ ±0.1% F.S.
INPUT RESISTANCE	420 ± 20Ω
OUTPUT RESISTANCE	352 ± 2Ω
INSULATION RESISTANCE	> 5 GΩ
ZERO BALANCE	≤ ±0.5 % F.S.
RECOMMENDED SUPPLY VOLTAGE	10 V
NOMINAL SUPPLY VOLTAGE RANGE	1-15 V
MAXIMUM SUPPLY VOLTAGE	18 V
MECHANICAL LIMIT values referred to nominal load:	
a) minimum load	0%
b) service load	120%
c) max permissible load	150%
d) breaking load	> 500% > 400% > 300% > 200%
e) max transverse load	50%
REFERENCE TEMPERATURE	+23°C
TEMPERATURE NOMINAL RANGE	-10/+40 °C
WORKING TEMPERATURE RANGE	-20/+70 °C
STORAGE TEMPERATURE RANGE	-20/+80 °C
WEIGHT	~ 11 kg ~19 kg
PROTECTION CLASS (EN 60529)	IP65 with MIL connector (Option IP68 with fixed cable)
EXECUTION MATERIAL	Stainless Steel
CABLE LENGTH	Standard 5m option: 20m

Electrical Connections



PVC 105°C shielded cable, Ø 4.8mm with 4 tinned Ø0.35mm² conductors.

Load Cell OUTPUT



Standard cable colour

- A = Excitation + Red**
- B = Excitation – Black**
- C = Signal – Yellow**
- D = Signal + White**

2,4GHz wireless communication



T24HS for communication to 1 load cell

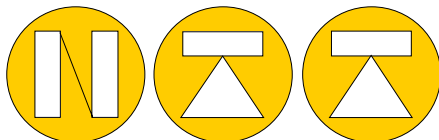
T24HA for communication to 8 different load cells.

Please contact us for further information on this new T24 wireless system !!.

Several models of transmission units to be mounted on the load cell



T24-AO1 for analogue output of the wireless signal



NORDIC TRANSDUCER

Als Odde - DK9560 Hadsund Denmark
 Tel. 045 98581444 Fax. 045 98581866
 E-mail: ntt@ntt.dk Internet: <http://www.ntt.dk>

/ Distributor:

In order to improve the technical performances of the product, the company reserves the right to make any change without notice.
